

# COMPANY PROFILE for CITY PAINTS TRD. & CON. W.L.L



Super  
Durable

## Stone Finish

Natural stone Effect Paint System

1. Best looking real stone effect
2. Super long lifetime durability
3. Various unique design customized for your home.



Efficient  
Purification  
& Flavor

## Air Fresh

Odorless interior wall paint system

1. Totally odorless without any smell
2. Purification ability for indoor air.
3. Durable filming for anti-scratch function.



Strong  
Weatherability

## Weather Guard

Anti-fouling and colour-retaining  
exterior wall paint system

1. Excellent weatherability
2. Protection against ultraviolet damage
3. Super long color-lasting





## Contents

.....

U t

\ #

@\ #

5 j U o

6 - y =o- h

07 h O

8 Projects List

09 Others



## **About Us**

City Paints is well established in 2018, Doha Qatar, as one of the only several local paint manufacturers and started operational work with combining research and development with in-depth local market understanding, we provide end-to-end solutions for virtually all kinds of painting needs – from home furnishings, high-rise buildings, factories to numerous industrial applications.

Guided by our core values of integrity, resourcefulness and drive to achieve excellence in everything we do, we have and will continue to deliver innovative products and services to protect and beautify our surroundings.

## **Our Business Vision**

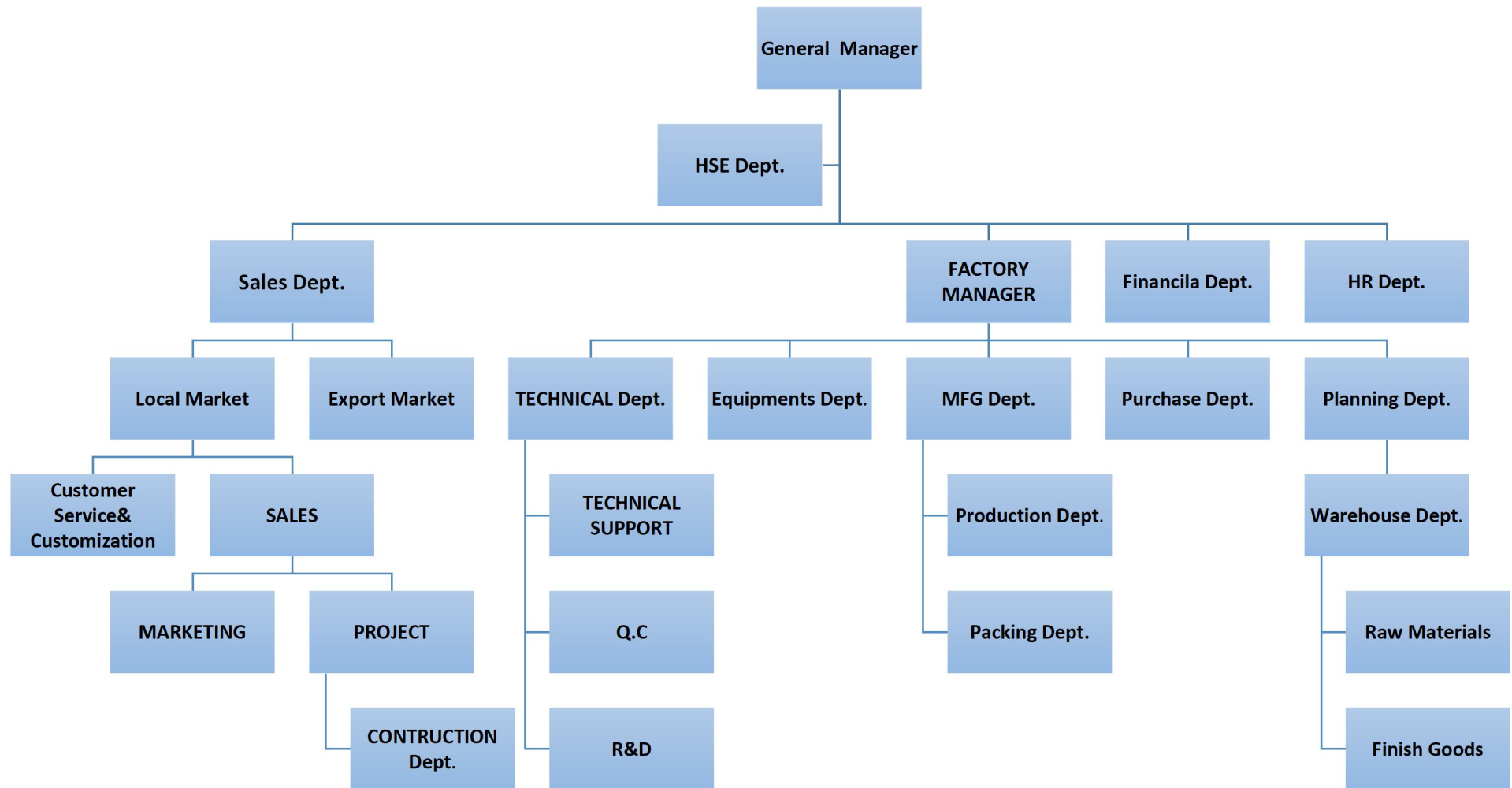
We aim to build upon the strength of current foundations to meet the demands and challenges of the future and seek to explore new technologies and create paint innovations to cater to our customers' needs.

City Paints will be establishing the brand within the high-density retail areas around you, where the need for a quality product and an equally important expert service is required. The City Paints team believes through good product knowledge and the correct advice that the City Paints brand will prosper and will ensure the property owner of an excellent and durable paint finish.

## **Our Quality Vision**

We seek to develop technologically advanced yet environmental friendly paint products that will not only beautify but also protect our surroundings.

# CITY PAINTS TRADING&CONTRACTING ORGANIZATION CHART







# CERTIFICATE

*This is to Certify that the*  
*Environmental Management System*  
*of*  
**CITY PAINTS TRADING AND CONTRACTING**

Building 19, Shop 3 & 4, Barwa village, Doha Qatar

has been independently assessed and is compliant  
with the requirements of

**ISO 14001:2015**

This Certificate is applicable to the following product or service ranges:

Manufacturing and Trading in Paints and Chemicals.

*Certificate No.: QA85769B*

Date of initial registration	17 June 2019
Date of this Certificate	17 June 2019
Surveillance audit on or before	16 June 2020
Recertification Due / Certificate expiry	16 June 2022

This Certificate is property of LMS Certifications and remains valid  
subject to satisfactory surveillance audits.

*Director*

For verification and updated information concerning the present certificate visit to [www.lmscert.com](http://www.lmscert.com)

This Certificate is the property of LMS Certification Limited and shall be returned immediately when demanded.



ACCREDITED  
Management Systems  
Certification Body  
MSCB132



LMS Certification Limited  
35 Park Hill, Huddersfield, HD2 1QG, West Yorkshire, United Kingdom.  
Phone : +44 2089355094  
Visit :- [www.lmscert.com](http://www.lmscert.com)  
E-mail :- [info@lmscert.com](mailto:info@lmscert.com)



LMS/IAS/F109E/17/REV02



# CERTIFICATE

*This is to Certify that the  
Quality Management System  
of*

## **CITY PAINTS TRADING AND CONTRACTING**

**Building 19, Shop 3 & 4, Barwa village, Doha Qatar**

**has been independently assessed and is compliant  
with the requirements of**

**ISO 9001:2015**

**This Certificate is applicable to the following product or service ranges:**

**Manufacturing and Trading in Paints and Chemicals.**

*Certificate No.: QA85769A*

**Date of initial registration** 17 June 2019

**Date of this Certificate** 17 June 2019

**Surveillance audit on or before** 16 June 2020

**Recertification Due / Certificate expiry** 16 June 2022

This Certificate is property of LMS Certifications and remains valid  
subject to satisfactory surveillance audits.

*Director*

For verification and updated information concerning the present certificate visit to [www.lmscert.com](http://www.lmscert.com)

This Certificate is the property of LMS Certification Limited and shall be returned immediately when demanded.



**LMS Certification Limited**  
35 Park Hill, Huddersfield, HD2 1QG, West Yorkshire, United Kingdom.  
Phone : +44 2089355094  
Visit :- [www.lmscert.com](http://www.lmscert.com)  
E-mail :- [info@lmscert.com](mailto:info@lmscert.com)



LMS/IAS/F109Q/17/REV02



## **Quality, Environmental, Health and Safety (QEHS) Policy**

**OUR MISSION** is to supply a wide range of high performance, superior quality products; delivered to our customers with care and impeccable service, all this while we operate in a safe, environmentally responsible and sustainable manner.

### **OUR COMMITMENT**

1. We are totally committed to business and operational excellence and we pledge to provide a safe and healthy work environment for all persons working directly or indirectly for City Paints.
2. We will comply and fulfil all applicable Quality, Environmental and Occupational Health and Safety (OH&S) legal requirements and other requirements.
3. With our Quality, Environmental, Health and Safety Management System (QEHSMS), we will continually develop and improve on our systems and processes; and at the same time nurture our workforce to develop talents.
4. We will support the setting and implementation of QEHS objectives, targets and programmes and assess OH&S opportunities to constantly improve Quality, Environmental and OH&S Key Performance Indicators (KPI).
5. We pledge to protect the environment and prevent pollution; we will take all possible steps to minimise waste, eliminate hazards and reduce OH&S risks at our workplace.
6. Our workforce is the core of our existence. We encourage open communication and worker participation; we will openly establish dialogues to consult our workers, Union and all related parties on how we can improve and optimise our operations. We are committed to prevent work-related injury and ill health to our workers.



## Our Featured Projects

S.N	ITEM NAME	UNIT
	<b>EMULSION BASED PRODUTS</b>	
1	AIR FRESS PVA PRIMER WHITE	18LTR/GAL.
2	AIR FRESS ACRYLIC PRIMER	18LTR/GAL.
3	AIR FRESH PENETRATING SEALER	18LTR/GAL.
4	AIR FRESH BLOCK FILLER	25KG
5	AIR FRESH JOINT COMPOUND	28KG
6	AIR FRESH STUCCO/PUTTY	25KG
7	AIR FRESH INTERIOR MATT	18LTR/GAL.
8	AIR FRESH PREMIUM INTERIOR MATT	18LTR/GAL.
9	AIR FRESH SUPREME INTERIOR MATT	18LTR/GAL.
10	AIR FRESH ELASTIC INTERIOR MATT	18LTR/GAL.
11	AIR FRESH EGGSHELL INTERIOR	18LTR/GAL.
12	AIR FRESH SILK	18LTR/GAL.
13	AIR FRESH ODORLESS CARE SILK	18LTR/GAL.
14	AIR FRESH ANTI-SCRATCH INTERIOR MATT	18LTR/GAL.
15	AIR FRESH WASHABLE INTERIOR MATT	18LTR/GAL.
16	AIR FRESH ANTI-STAIN INTERIOR MATT	18LTR/GAL.
17	WEATHERGUARD ACRYLIC EMULSION	18LTR/GAL.
18	WEATHERGUARD PURE ACRYLIC EMULSION	18LTR/GAL.
19	WEATHERGUARD ROCKSHEILD EMULSION	18LTR/GAL.
20	WEATHERGUARD ELASTIC EMULSION	18LTR/GAL.
21	WEATHERGUARD SILKSHEILD	18LTR/GAL.
22	WEATHERGUARD TEXTURE COAT(FINE/MEDIUM)	18LTR/GAL.
23	WEATHERGUARD PLASTIC EMULSION	18LTR/GAL.
24	WEATHERGUARD SPRAY PLASTER	18LTR/GAL.

	<b>ALKYD BASED PRODUCTS</b>	
25	SYNTHETIC ENAMEL GLOSS I/II/MATT	18LTR/GAL.
26	SYNTHETIC ENAMEL VARNISH GLOSS/MATT	18LTR/GAL.
27	RED OXIDE PRIMER	18LTR/GAL.
28	GREY OXIDE PRIMER	18LTR/GAL.
29	SYNTHETIC UNDERCOAT	18LTR/GAL.
30	ZINC CHROMATER PRIMER	18LTR/GAL.
31	ZINC PHOSPHATE PRIMER	18LTR/GAL.
	<b>NC FINISHES</b>	
32	NC PRIMER	18LTR/GAL.
33	NC PRIMER SURFACE(GREY,WHITE,BLACK)	18LTR/GAL.
34	NC PUTTY	18LTR/GAL.
35	NC LACQUER THINNER	18LTR/GAL.
36	NC LACQUER TOP COAT	18LTR/GAL.
37	NC LACQUER CLEAR GLOSS	18LTR/GAL.
38	NC LACQUER CLEAR MATT	18LTR/GAL.
39	NC SANDING SEALER	18LTR/GAL.
	<b>FLOOR COATING</b>	
40	EPOXY PRIMER	18LTR/GAL.
41	EPOXY MIDDLE BASE SANDING	18LTR/GAL.
42	EPOXY TOP COAT SELF LEVELING	18LTR/GAL.
43	EPOXY TOP COAT SELF LEVELING COLORS	18LTR/GAL.
44	ARCYLIC ROAD MARKING(BLACK/WHITE/YELLOW)	18LTR/GAL.
	<b>STONE FINISH PRODUCT</b>	
45	STONE FINISH PRIMER(COLORED)	18LTR/GAL.
46	STONE FINISH PAINT(VARIOUS DESIGN)	20KG
47	STONE FINISH PROTECTION COAT(CLEAR)	20KG





## CITY PAINTS TRADING & CONTRACTING W.L.L

NO	PROJECT NAME	CONTRACTOR	Client/Consultant
1	AL Rayyan Tower	Sak Trading & Contracting company	Ezdan Real Estate
2	Al Wakra residential compound	Sak Trading & Contracting company	Ezdan Real Estate
3	Al Wakra Mall	Sak Trading & Contracting company	Ezdan Real Estate
4	Al Suwaidi palaces & Majilis	Daien Projects Management & Construction	Kayan Engineering Consultants
5	V.I.P Palace	Customer Deco	V.I.P customer
6	Paramount Residence Pearl	Construction and Re-construction Engineering Co.,.	AL Asmakh Group/CEC
7	Al Shahad Tower	Mirabello Trading & Decoration W.L.L.	Al Bandy real estate/MZP
8	Modrion Hotel	Roots Qatar	Al Hamla Real Estate
9	Al Masrah Park cornich	AG Middle East	Ashgal
10	Noura Al Nouaimi Hotel	BUKSHISHA BLDG. CONS. CO	Mr.Noura Al Nouaimi
11	AL KHARAEJ TOWERS (RES 01)	Construction& Re-Construction Engineering Co.	SH.Khaled Bin Naser Bin Hamad Al Thani
12	AL KHARAEJ TOWERS (RES 09)	Construction& Re-Construction Engineering Co.	SH.Khaled Bin Naser Bin Hamad Al Thani
13	AL KHARAEJ TOWERS (RES 10)	Construction& Re-Construction Engineering Co.	SH.Khaled Bin Naser Bin Hamad Al Thani
14	MARSA ARABIA RESORT LCC	Construction & Development Company	Construction & Development Company



## CITY PAINTS TRADING & CONTRACTING W.L.L

15	HOTEL APARTMENT(2B+G+M +7FLOOR)	BUKSHISHA Bldg.Const.Co.	Qatari Ailrchitectural&Planning Group
----	---------------------------------------	--------------------------	---



## **City Paints is an Environmentally Conscious Paint Company**

At City Paints our mission has always been to provide the best performing paint, in an environmentally sound manner to protect the health and well being of our customers. We were a disciplined leader in the concept of green product manufacturing long before it became popular.

## **Products & Services**

Please Ref to City Paints Product Catalogue

### **Industries of supply**

Building and Renovations  
Steel Industry  
Woodwork Industry  
Flooring Industry  
Road Coatings  
Epoxy Coatings  
Decorative market  
Waterproofing market

### **Services offered**

Quality Guarantee  
Private customization  
Colour matching  
Colour combinations  
Free on site advice and quotations  
Free technical assistance  
Product application training  
Paint training - Application  
Paint training - Colour and the use of colour  
Paint training - Product knowledge  
Friendly and knowledgeable service

## **Company Details**

Head Office

T +974 44929952/44160411

E [info@city-paints.com](mailto:info@city-paints.com)

W [www.city-paints.com](http://www.city-paints.com)

Factory Address :Gate No.174 Street No.3,New Industrial Area