

Base colour: Sunny YG 1114A
Glazed over with: Almond Jay VM 273



Base colour: Tempest Sea AC 2107A
Glazed over with: Cobalt Cabana VP 243

MORE THAN JUST SPECIAL EFFECTS



SoftMatt Antique

Special Effect Paint

SURFACE PREPARATION

- 01 REPAIR**
Remove all loose, defective paint or powdery residue. Repair cracks and uneven surfaces with Multi-purpose Joint Compound.
- 02 CLEAN**
Clean the area thoroughly and let it dry. Make sure it is free of dirt, grease and other foreign matter.
- 03 PAINT**
Allow all surfaces to dry completely prior to painting.
- 04 PROTECT**
Safeguard your masterpiece against dirt and water with 1 to 2 coats of Clear Coat.



Create your SoftMatt Antique masterpiece

STEP 01
Apply 2 coats of Odourless Primer on the wall using a paint roller.

STEP 02
Apply 2 coats of Odourless AirCare pre-matched base colour using a paint roller if required.

STEP 03
Scoop a palm-sized dollop of SoftMatt Antique Base coat using a putty knife. Then, transfer it onto the paint tray.

STEP 04
Apply the first coat of SoftMatt Antique base coat using a spatula. After 2 to 4 hours, apply the second coat to match your desired design.

STEP 05
Finish off with 1 to 2 coats of SoftMatt Antique Top Coat by using a paint roller.



PAINT ON DIFFERENT SURFACES

| WOOD LAMINATE | METAL | TILES | WOOD |
|---------------|-------|-------|------|
| | | | |

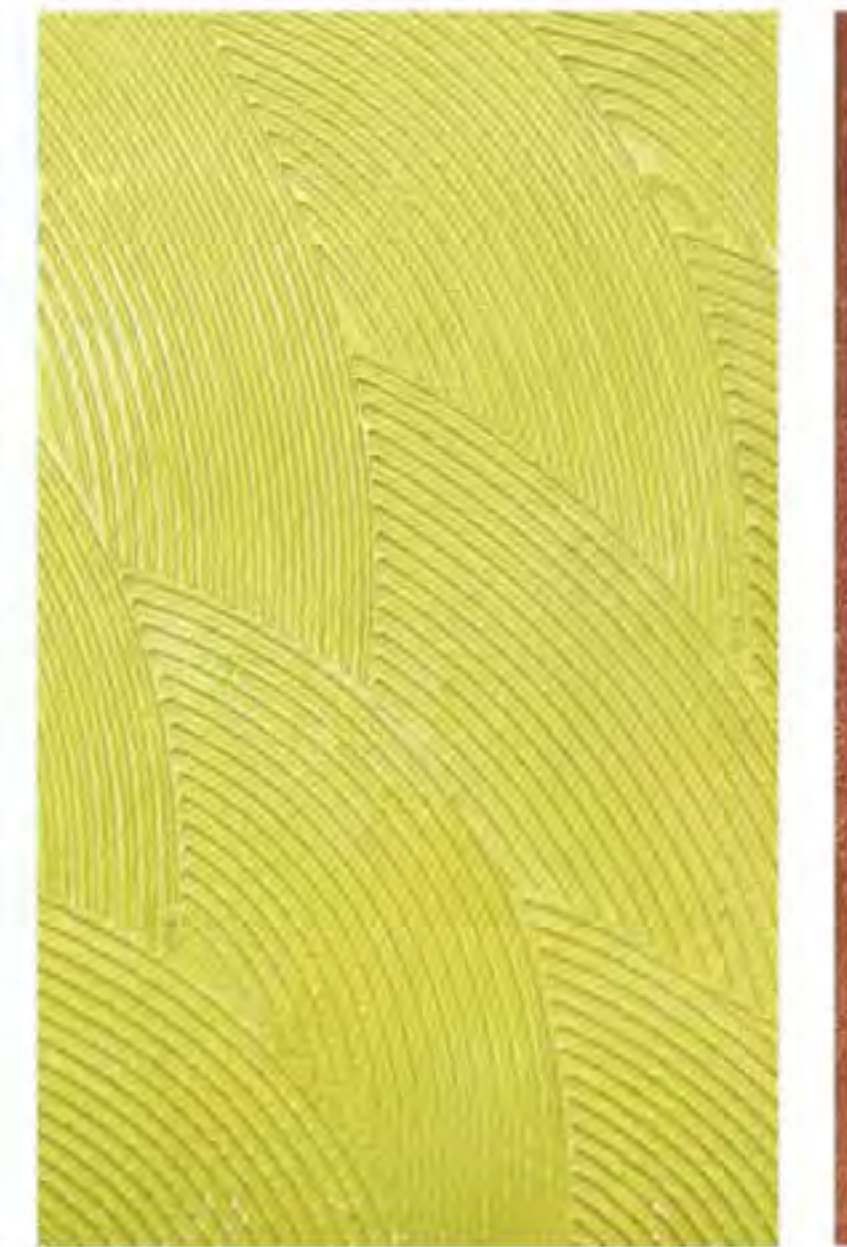
CITY PAINTS™
New Industry Area, Street 3, Gate 174
Doha - Qatar
www.city-paints.com
Tel: 44929952 Fax: 44160411

CREATIVITY WITHOUT BOUNDARIES

The walls of a home need not stay plain and boring. Put some mojo onto your walls with different creative designs and let them tell your stories and reflect your personality. Combine SoftMatt Antique with any of your favourite colours of City Paints® Special Effect Paints for a masterpiece of unparalleled creativity.



3D Silver
Glazed over with Introspect



3D Lemon
Glazed over with Modern Mojito



3D Leather
Glazed over with Burnese Teak

Create your 3D PAINT masterpiece



STEP 01
Apply 2 coats of SoftMatt Antique Primer onto the wall using a paint roller.

STEP 02
Apply the first coat of Base coat with a stainless steel trowel and wait 2 to 4 hours before applying the next coat. Repeat this step for the second and third coat.

STEP 03
After 20 to 30 minutes, create irregular veins (similar to the pattern of stone walls) using a hard-bristled spatula.

STEP 04
Smoothen the surface with a stainless steel trowel.

STEP 05
Create brick, block or weave designs with a flat-tip screwdriver.

STEP 06
After 10 to 12 hours, use a paint brush or sponge to finish your 3D paint with colours for unsurpassed creative combinations.

STONE FINISH



001



002



003



004



005



006



007



008



009



010

STONE FINISH



011



012



013



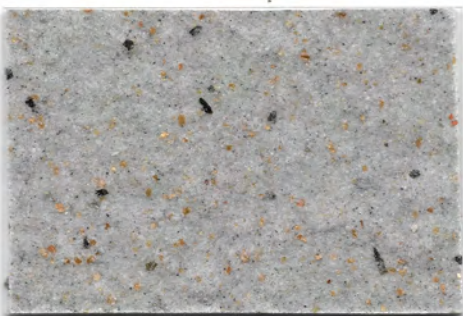
014



015



016



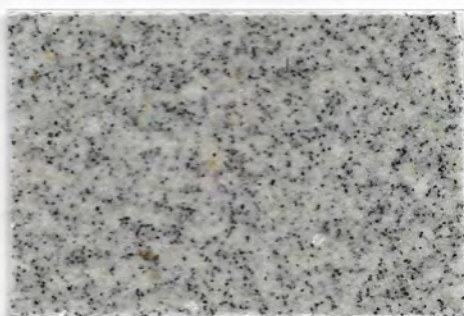
017



018



019



020

SOFTMATT ANTIQUE



7264



5219



7234



5211



5151



5221



5100



5205

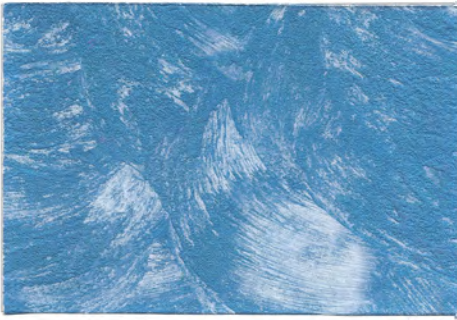


5553



5416

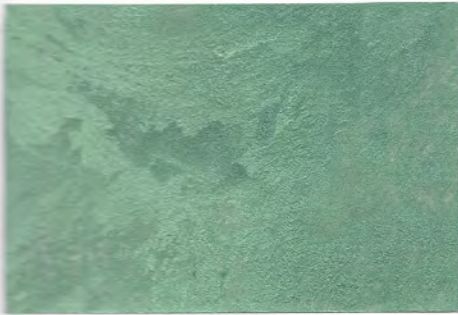
SOFTMATT ANTIQUE



5425



5304



5408



5301



5435



5502



5231



5500



5451



5402